
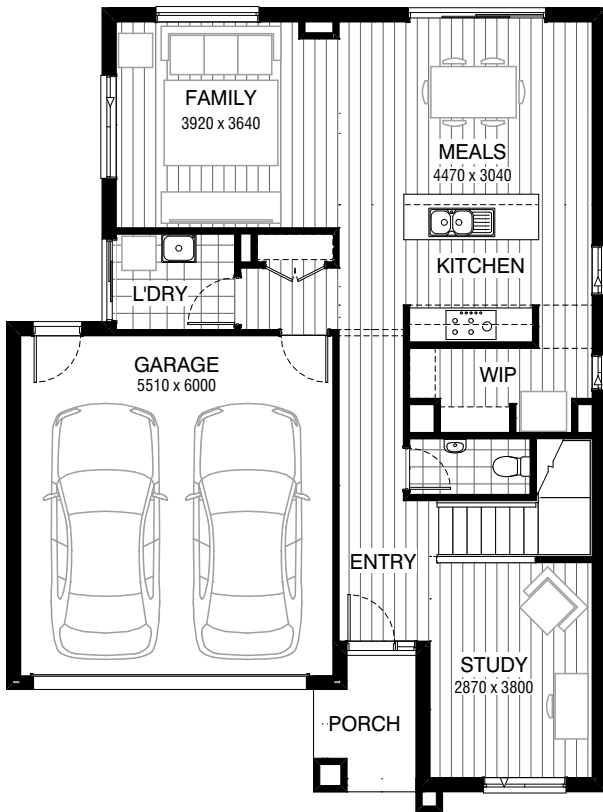
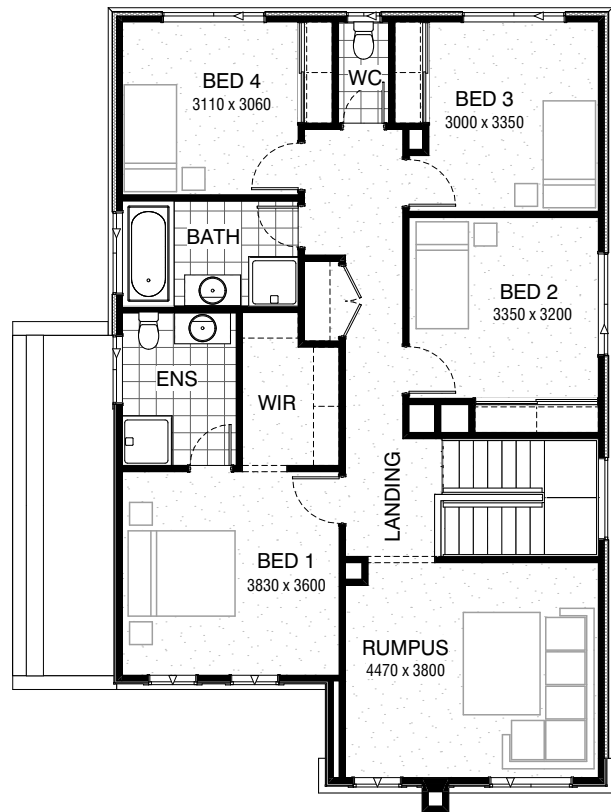


Total squares **25.4sq**

 **4**  **2.5**  **2**



GROUND FLOOR



FIRST FLOOR

**FLOORPLAN OPTIONS**

All available ready-to-go floorplan options for this design can be viewed on the following pages, or visit [www.burbank.com.au](http://www.burbank.com.au).

**Facades available:**

Condor, Matisse, Monet	
<b>Overall home width</b>	<b>10.55m</b>
<b>Overall home length</b>	<b>14.15m</b>




Residence	195.5m <sup>2</sup>	21.1sq
Garage	36.4m <sup>2</sup>	3.9sq
Porch	4.0m <sup>2</sup>	0.4sq
<b>Total</b>	<b>235.9m<sup>2</sup></b>	<b>25.4sq</b>

Listed details based on Condor facade floorplan (illustrated)  
^ This design is suitable for small lot housing code

\*Copyright conditions. All photos and illustrations are representative only. Floor plans and specifications may be varied by Burbank without notice, the dimensions are diagrammatic only and a Building Contract with final drawings will display correct dimensions and detail. All designs are the property of Burbank and must not be used, reproduced, copied or varied, wholly or in part without written permission from an authorised Burbank representative. Copyright Burbank Australia Pty Ltd. ABN 91 007 099 872. Builders Registration Number CDB-U-52603.

**Call 13 BURBANK**  
**Visit [burbank.com.au](http://burbank.com.au)**

**FLOORPLAN OPTIONS**




 **4**    **2.5**    **2**



## KITCHEN OPTION STANDARD COLOUR BOARD

Provide Kitchen/Butlers Option with plaster lined W.I.L with 1no. 720mm flush panel hinged door, 4no. 450mm deep shelves and 4no. 300mm deep shelves to suit. Provide 1100mm wide island bench in lieu of standard, 3no. 450mm base cabinets, 1no. 800mm base cabinet, 1no. laminated DW. provision, 1no. 450mm drawers, 1no. laminated open shelf above refrigerator space, 1no. 600mm base cabinet, 1no. laminated W.O. / MW. tower with 2no. pot drawers below and 1no. 600mm cabinet above, 1no. retractable rangehood with 900mm gas cooktop, 1no. 700mm base cabinet, 1no. 300mm base cabinet, 1no. 300mm overhead cabinet, 1no. 700mm overhead cabinet, 2no. 450mm overhead cabinets and 1no. 600mm overhead cabinet. Provide additional 1no. 514mm x 1210mm aluminium fixed window to Kitchen and 1no. 514mm x 850mm aluminium fixed window to Butlers and additional plaster bulkheads to Kitchen / Butlers and additional tiled splashback and bench top to suit.  
Option contains standard specification

FLOORPLAN OPTIONS



 **4**  **2.5**  **2**



## KITCHEN OPTION UPGRADE COLOUR BOARD

Provide Kitchen/Butlers Option with plaster lined W.I.L with 1no. 720mm flush panel hinged door, 4no. 450mm deep shelves and 4no. 300mm deep shelves to suit. Provide 1100mm wide island bench in lieu of standard, 3no. 450mm base cabinets, 1no. 800mm base cabinet, 1no. laminated DW. provision, 1no. 450mm drawers, 1no. laminated open shelf above refrigerator space, 1no. 600mm base cabinet, 1no. laminated W.O. / MW. tower with 2no. pot drawers below and 1no. 600mm cabinet above, 1no. retractable rangehood with 900mm gas cooktop, 1no. 700mm base cabinet, 1no. 300mm base cabinet, 1no. 300mm overhead cabinet, 1no. 700mm overhead cabinet, 2no. 450mm overhead cabinets and 1no. 600mm overhead cabinet. Provide additional 1no. 514mm x 1210mm aluminium fixed window to Kitchen and 1no. 514mm x 850mm aluminium fixed window to Butlers and additional plaster bulkheads to Kitchen / Butlers and additional tiled splashback and bench top to suit.  
Option provides upgrade specification

**FLOORPLAN OPTIONS**

 **4**    **2.5**    **2**





## LAUNDRY OPTION STANDARD COLOUR BOARD

Provide Laundry Option with additional s.s. inset trough, 1no. 800mm base cabinet, 1no. 400mm base cabinet, 1no. 800mm overhead cabinet, 1no. 400mm overhead cabinet and additional tiled splashback and bench top to suit.

Option contains standard specification

FLOORPLAN OPTIONS

 **4**  **2.5**  **2**





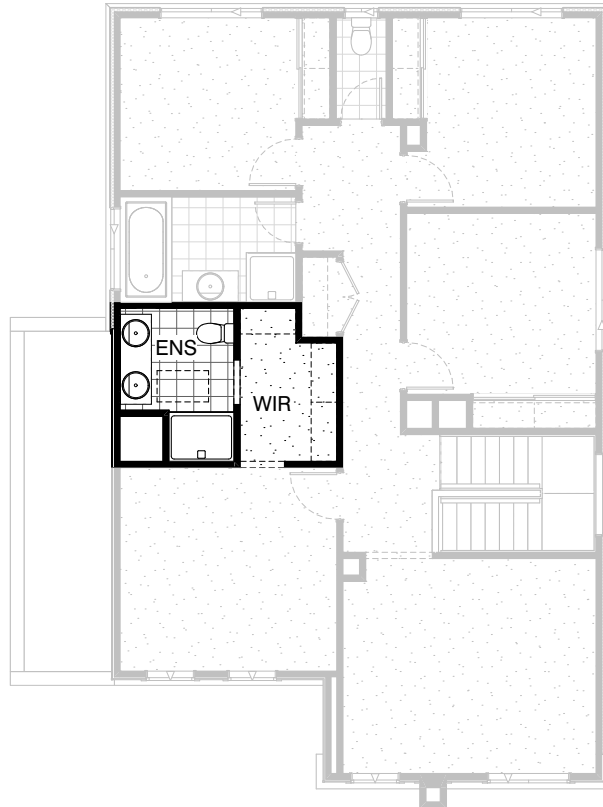
## LAUNDRY OPTION UPGRADE COLOUR BOARD

Provide Laundry Option with additional s.s. inset trough, 1no. 800mm base cabinet, 1no. 400mm base cabinet, 1no. 800mm overhead cabinet, 1no. 400mm overhead cabinet and additional tiled splashback and bench top to suit.

Option provides upgrade specification

**FLOORPLAN OPTIONS**




 **4**  **2.5**  **2**

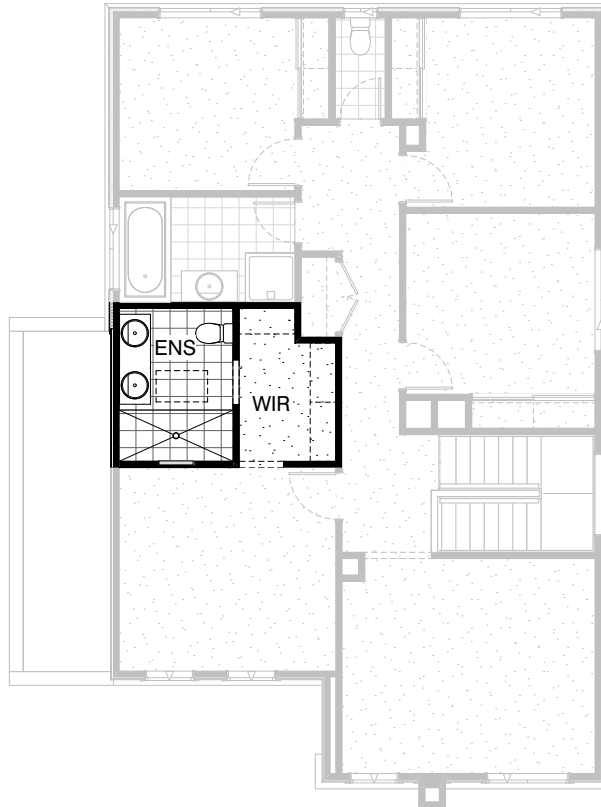


**ENSUITE OPTION  
STANDARD COLOUR BOARD**

Provide Ensuite Option with 1200mm x 900mm  
polymarble shower base in lieu of standard, 1no. 1582mm  
wide vanity basin unit with 2no. basins, 1no. 800mm wide opening  
with bulkhead over in lieu of standard 1no. 720mm  
flush panel hinged door, 1no. skylight in lieu of  
standard 1no. 1200mm x 1210mm aluminium  
sliding window and relocate WC to suit.  
Option contains standard specification

**FLOORPLAN OPTIONS**



 **4**  **2.5**  **2**

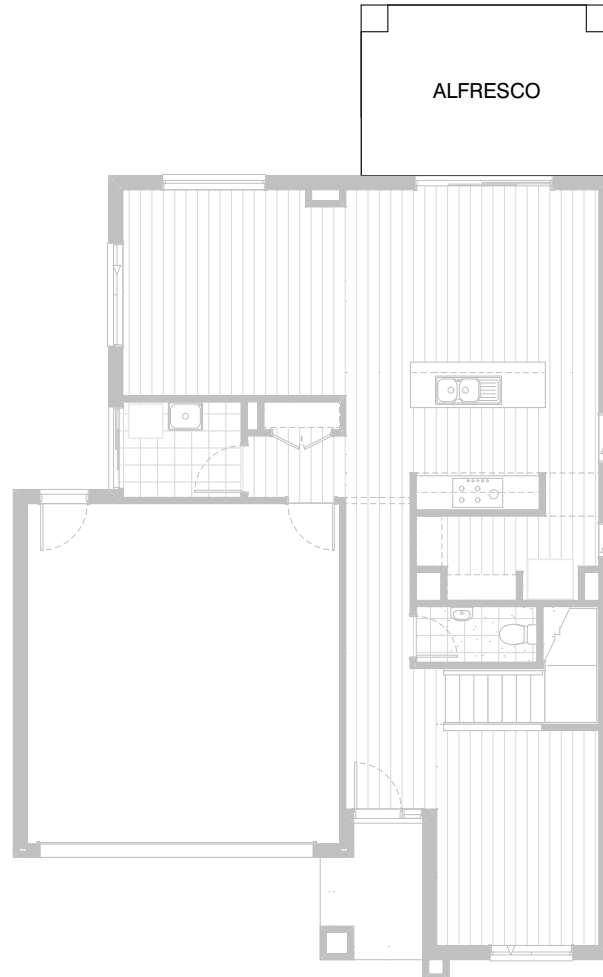


### **ENSUITE OPTION UPGRADE COLOUR BOARD**

Provide Ensuite Option with additional wall to wall tiled shower base with tiled niche in lieu of standard, 1no. 1582mm wide vanity basin unit with 2no. basins, 1no. 800mm wide opening with bulkhead over in lieu of standard 1no. 720mm flush panel hinged door, 1no. skylight in lieu of standard 1no. 1200mm x 1210mm aluminium sliding window and relocate WC to suit.  
Option provides upgrade specification

**FLOORPLAN OPTIONS**

 **4**  **2.5**  **2**






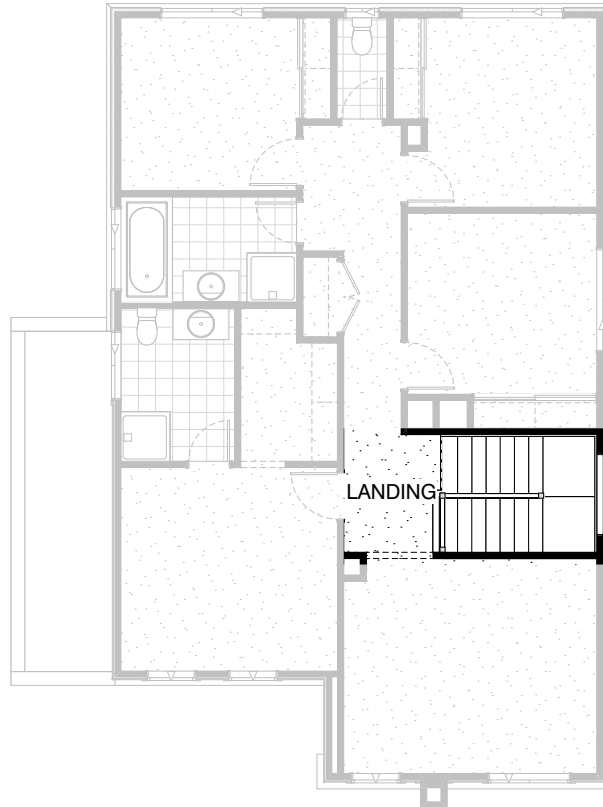
## ALFRESCO OPTION

Provide Alfresco to rear of Meals with tiled hip roof, structural concrete floor, light point and 2no. 470mm x 470mm brick piers.  
Increases area by 13.32m<sup>2</sup>.  
Increase length by 3000mm.



**FLOORPLAN OPTIONS**




 **4**    **2.5**    **2**

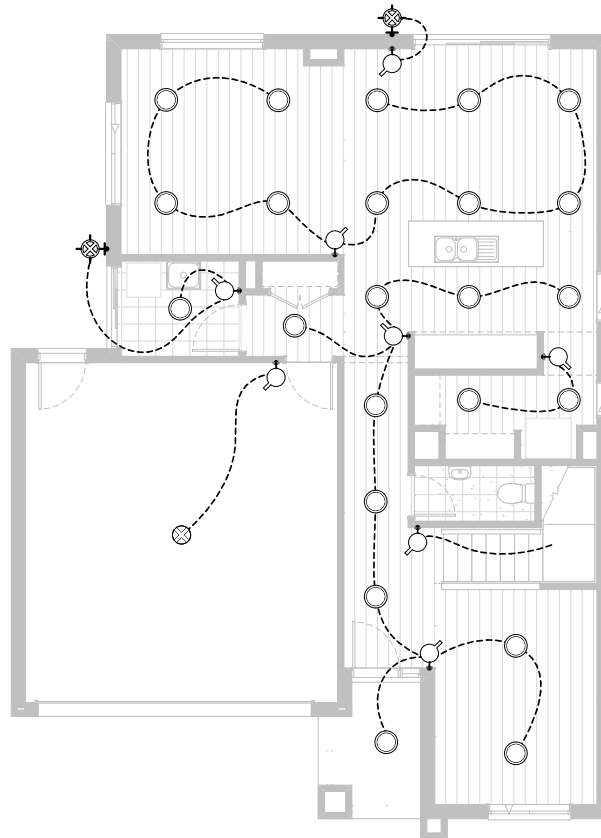


**UPGRADE STAIR OPTION**

Provide Upgrade specification to existing staircase

**FLOORPLAN OPTIONS**




 **4**    **2.5**    **2**

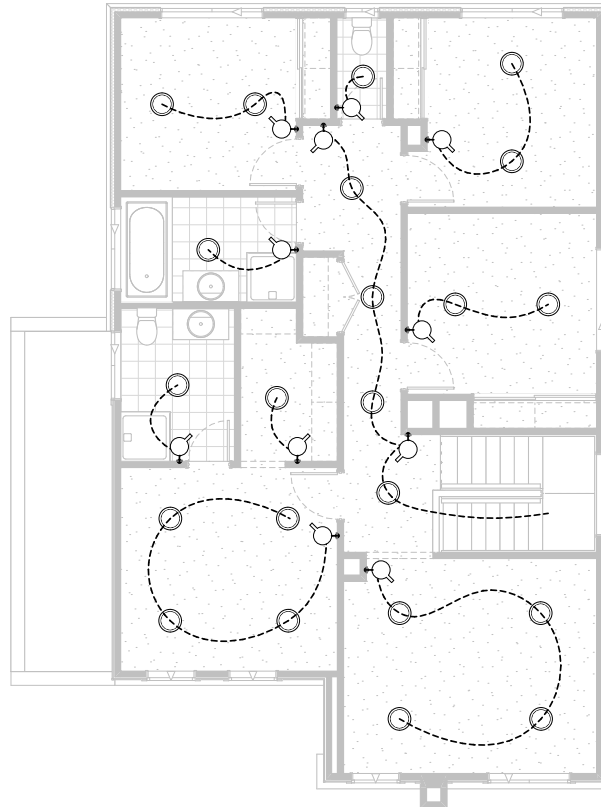


**Option ELE-1 GF**

Provide electrical upgrade.

**FLOORPLAN OPTIONS**

 **4**    **2.5**    **2**



**Option ELE-1 FF**

Provide electrical upgrade.